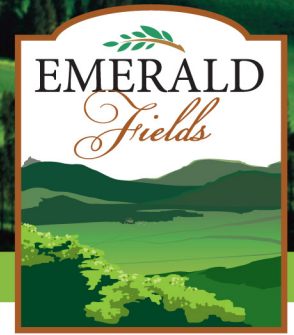


Lot 215

Heurich Construction, Inc.



Gracious Living

- Brick and Stone Exterior
- Level Homesite
- Landscaped Lot
- Covered Entry
- Open Concept
- Impressive 2 story entry
- 3 car Side Entry Garage
- 4 Spacious Bedrooms
- 3.5 baths
- 2nd floor laundry (with option for 1st floor laundry)
- Extra large mudroom
- Distinctive great room with wall of windows
- Fireplace in Great room
- Formal Dining room
- Office on main floor
- Walk out basement

Elegant Master bedroom with:

- Trayed ceiling
- 2 walk-in closets
- Pedestal tub
- Double bowl vanity

Delightful kitchen

- Breakfast area with vaulted ceiling and open to patio
- Walk-in pantry and Butlers pantry
- Center Island in kitchen

For more information call Bridget Minnock at
(C) 412.849.2762 or (O) 724.776.3686 x253
EmeraldFieldsatPine.com

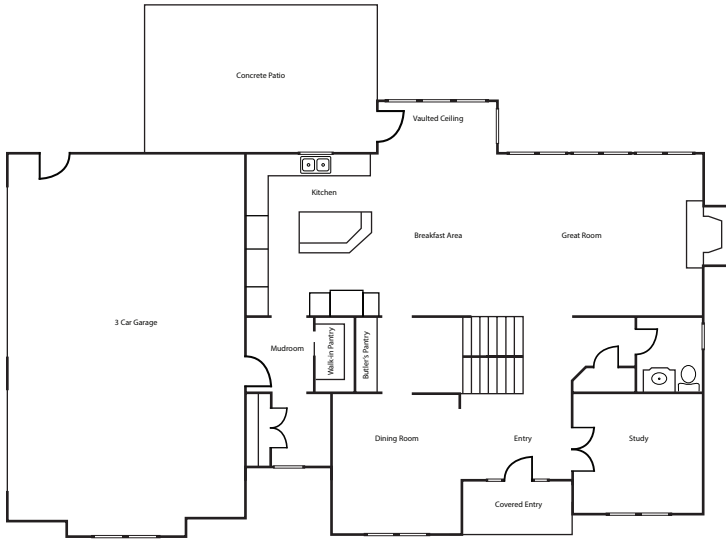


BERKSHIRE HATHAWAY
HomeServices

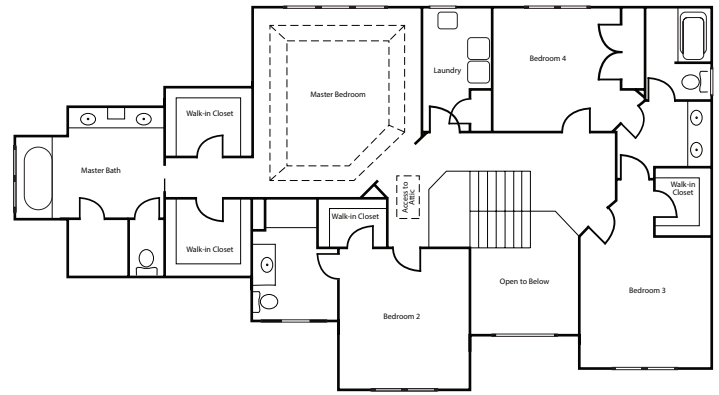
The Preferred Realty

Lot 215

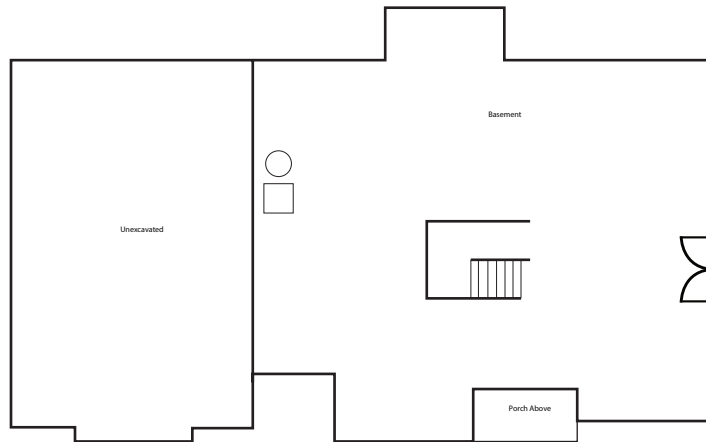
Heurich Construction, Inc.



First Floor



Second Floor



Basement

For more information call Bridget Minnock at
(C) 412.849.2762 or (O) 724.776.3686 x253
EmeraldFieldsatPine.com



BERKSHIRE HATHAWAY
HomeServices

The Preferred Realty

©2019 BHH Affiliates, LLC. An independently owned and operated franchise of BHH Affiliates, LLC. Berkshire Hathaway HomeServices and Berkshire Hathaway HomeServices symbol are registered service marks of HomeServices of America, Inc. Equal Housing Opportunity. Information not verified or guaranteed. If your home is currently listed with a Broker, this is not a solicitation.